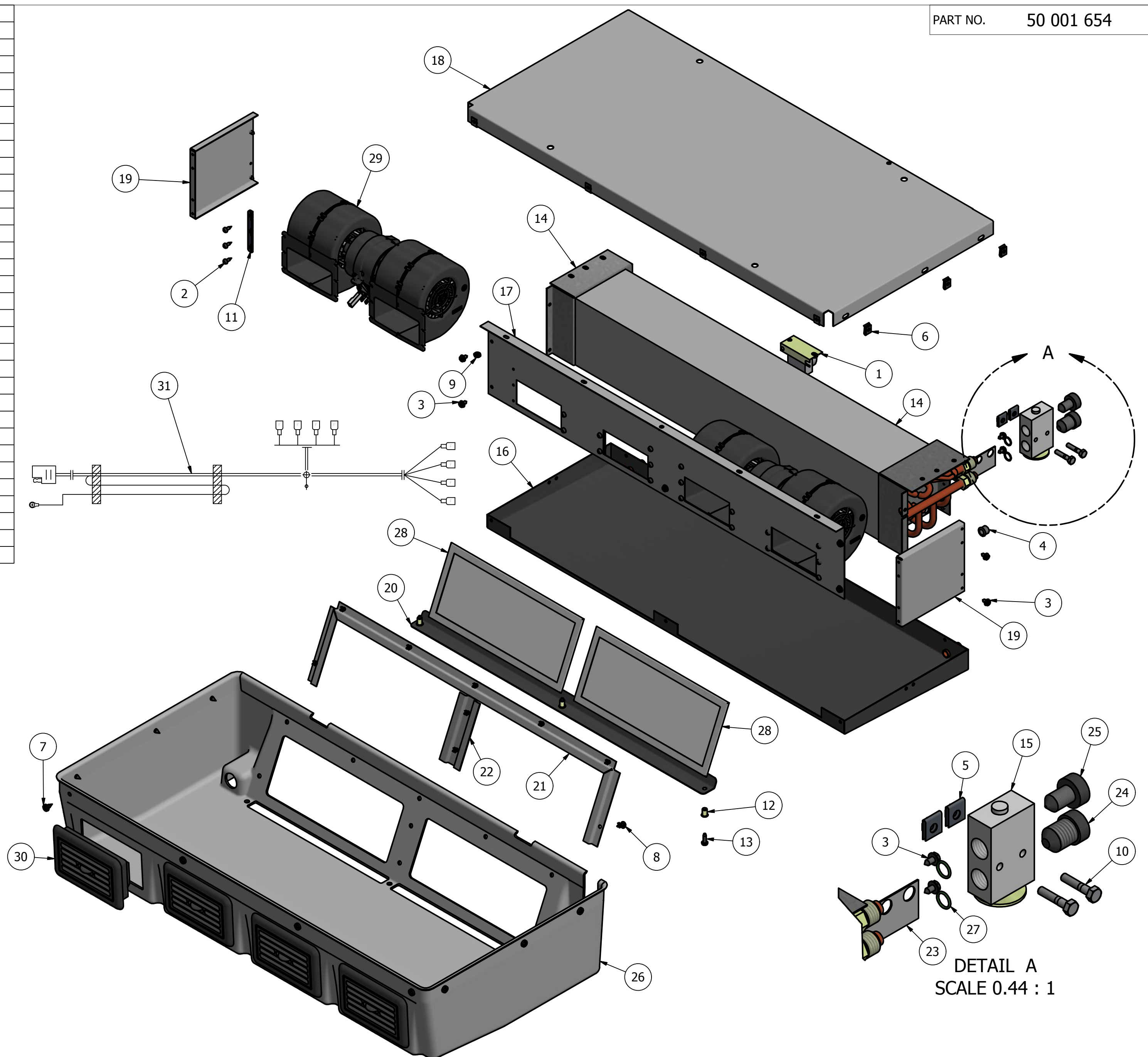
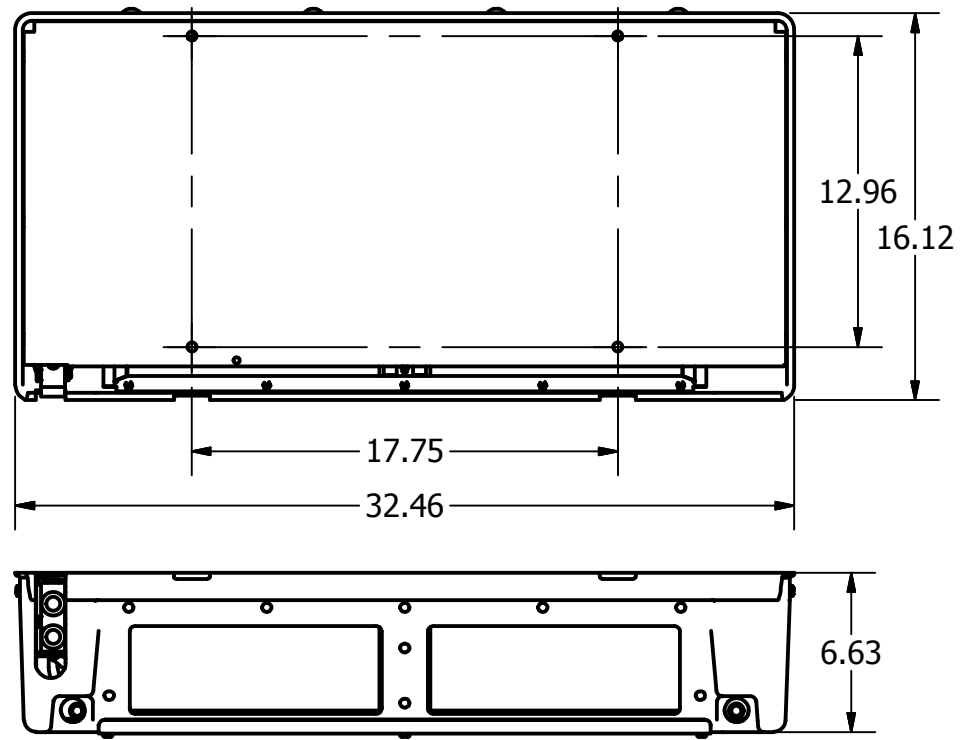


PARTS LIST			
ITEM	QTY	PART NUMBER	DESCRIPTION
1	1	01 000 351	T'STAT, NON-ADJ (31-39)
2	20	02 000 034	SCREW, 8 x 1/2 PH PHIL BLK
3	13	02 000 051	SCREW, 10x3/8 HEX WSHR TYPE-AB
4	1	02 000 055	GROMMET, 3/8" ID 1/2" OD
5	2	02 000 104	NUT, 1/4-20 CAGE
6	10	02 000 106	SPEED CLIP, #10
7	10	02 000 107	SCREW, 10 x 1/2 PH PHIL BLK
8	9	02 000 108	RIVET, SECONDARY HEAD
9	13	02 000 115	NUT, 10-24 HEX ZINC
10	2	02 000 240	BOLT, 1/4-20 x 1 1/4 SS
11	8	02 000 254	BRKT, SPAL BLOWER SUPPORT
12	3	02 000 593	INSERT,10-24 UNC (.020-.130) GAP
13	3	02 000 597	SCREW, 10-24 x 5/8 BLK TYPE 23 T
14	1	03 000 223	COIL, A/C C/O
15	1	05 000 022	VALVE, EXPAN BLOCK 134a 2 TON
16	1	06 000 590	DRAIN, PAN
17	1	06 000 592	BRACKET, BLOWER MOUNT
18	1	06 000 593	BASE, MOUNT 530/560
19	2	06 001 675	PLATE, SIDE
20	1	06 001 676	COVER, FILTER
21	1	06 001 677	BRKT, FILTER
22	1	06 001 678	BRKT, FILTER
23	1	06 001 679	BRKT, EXP VALVE SUPPORT
24	1	07 000 648	CAP, MALE PLAS 7/8-18 W/SEAL BI
25	1	07 000 649	CAP, MALE PLAS 5/8-18 W/SEAL BI
26	1	07 000 688	UNIT COVER, 530
27	2	08 000 008	O-RING, #8 13/32
28	2	08 000 152	FILTER, 3/16 x 5 x 5 1/2 WASHABLE
29	2	11 000 156	BLOWER ASSY, 12v DBL SM W/SP RE
30	4	11 000 179	LOUVER, RECT 1 1/2 x 3 3/4 x 5
31	1	01 000 323	HARN, SPAL DUAL 530/560 WIRE



MOUNT INFO



PROPRIETARY & CONFIDENTIAL. UNPUBLISHED WORK COPYRIGHT PRO AIR LLC. PRO AIR, LLC CLAIMS PROPRIETARY RIGHTS IN THE MATERIAL DISCLOSED HEREON. NEITHER THIS DRAWING NOR ANY REPRODUCTION OR PORTION THEREOF MAY BE DISTRIBUTED OR USED TO MANUFACTURE ANYTHING SHOWN HEREON WITHOUT PERMISSION IN WRITING FROM PROAIR, LLC.

REV. A

A LET.		16-241 NO.	RELEASED TO PRODUCTION REVISION	CEB BY	8/19/16 DATE	SIGNATURES DRAWN CEB CHECKED RAI APPROVED	DATE 8/19/16 8/19/16	 2900 COUNTY RD 6 W ELKHART, IN 46514	TITLE: EVAPORATOR - 560 USAGE: WITH COVER	PART NO. 50 001 654 SCALE: .22 : 1 SHEET 1 OF 1	SIZE A 1 OF 1
--------	--	------------	---------------------------------	--------	--------------	--	----------------------------	--	--	---	------------------