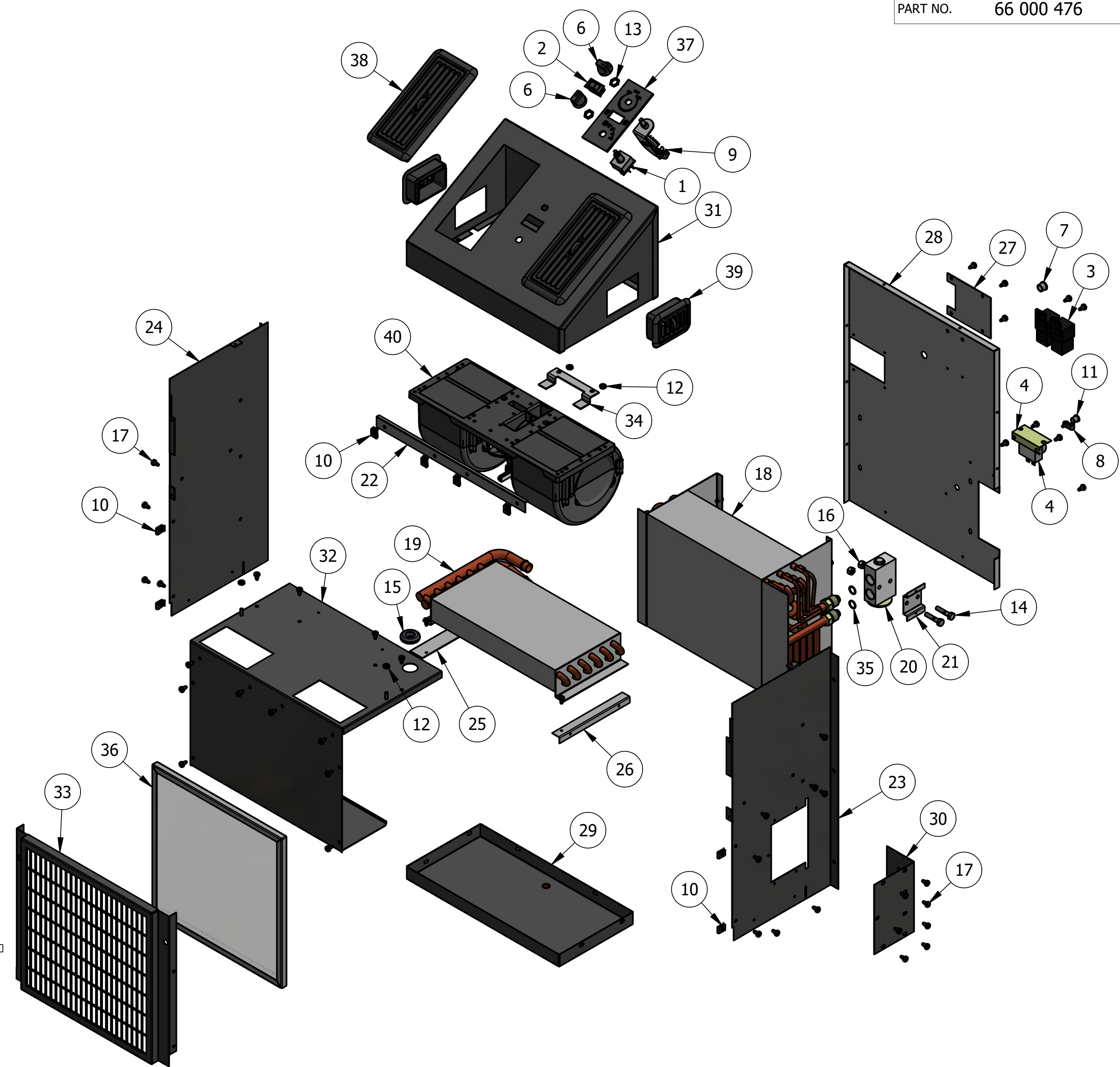


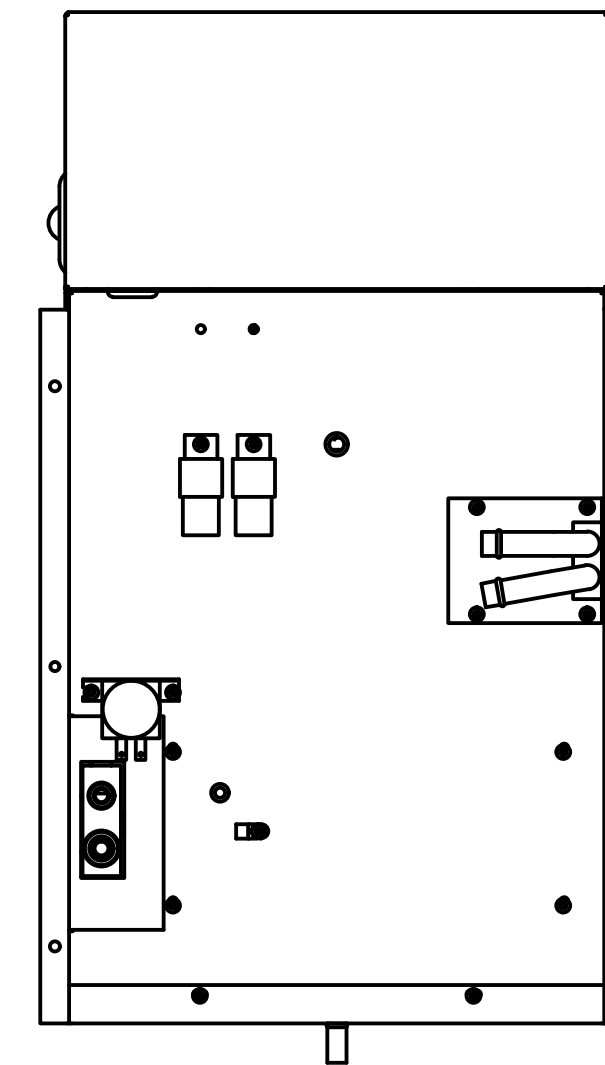
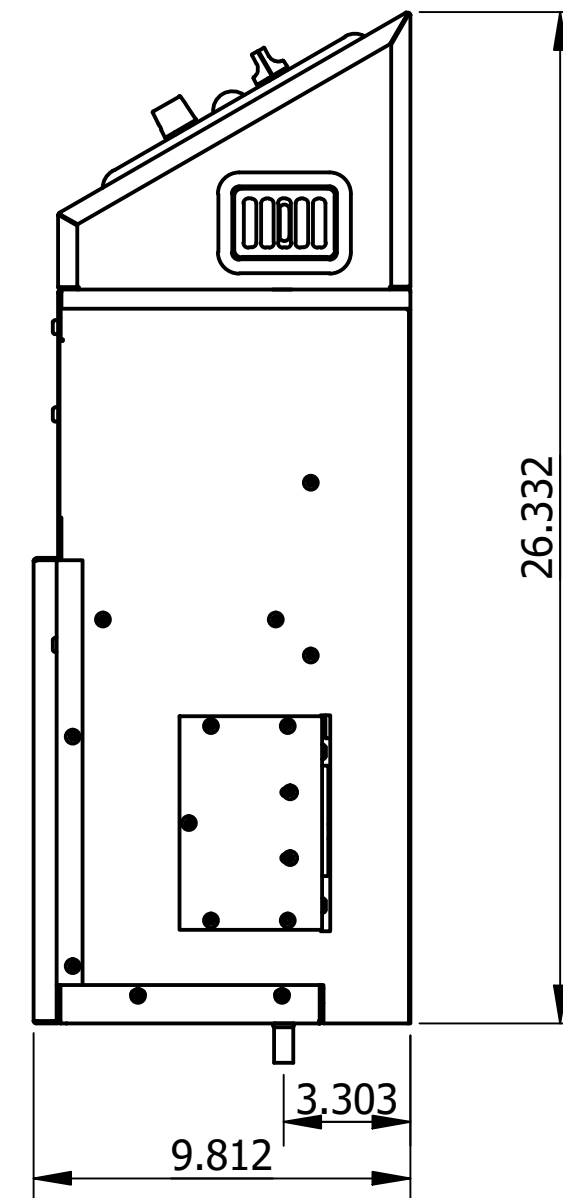
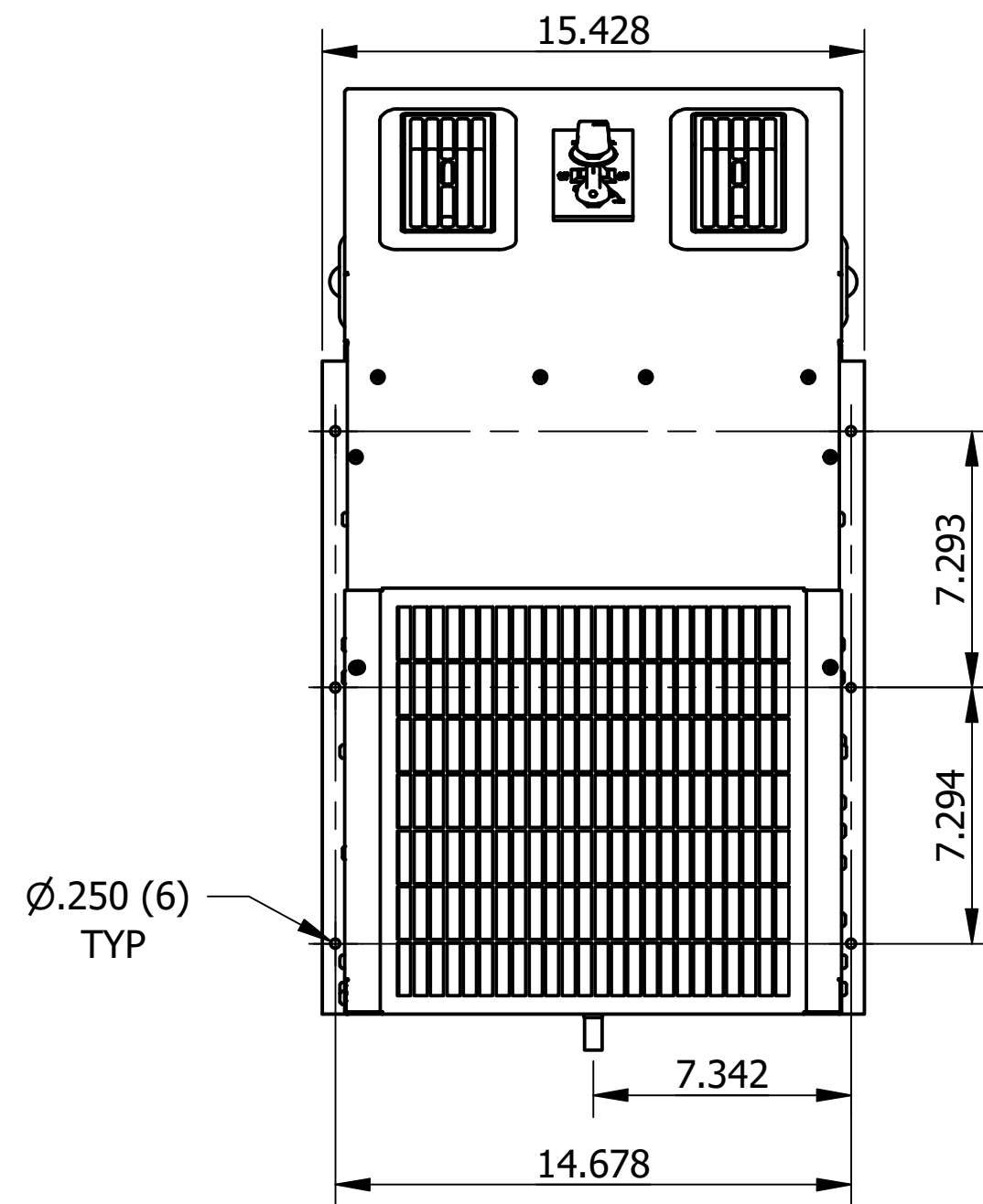
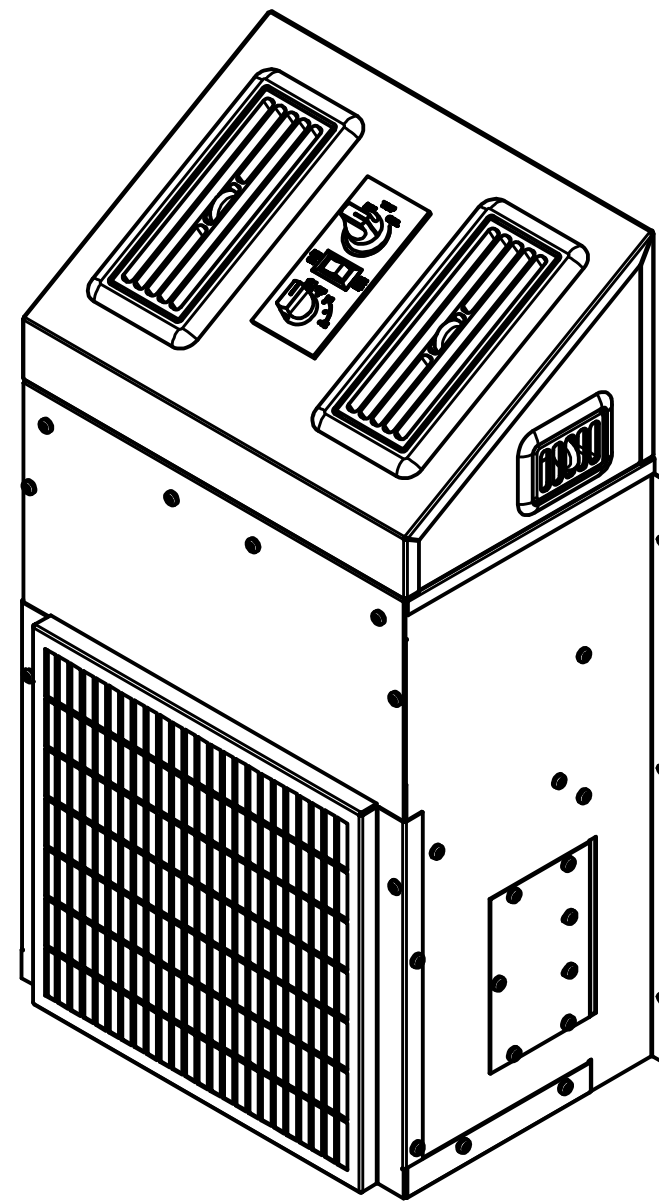
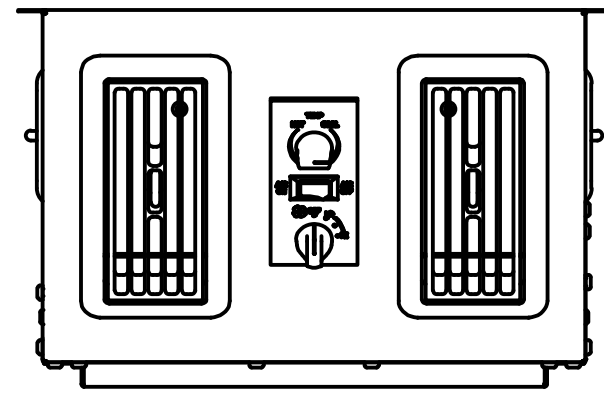
PARTS LIST			
ITEM	QTY	PART NUMBER	DESCRIPTION
1	1	01 000 008	SWITCH, 4-POS EXT. SHAFT
2	1	01 000 082	SWITCH, ROCKER SPST ON/OFF 960
3	2	01 000 136	RELAY, 40 AMP
4	1	01 000 351	T'STAT, NON-ADJ (31-39)
5	1	01 000 428	HARN, WIRE MAIN
6	2	01 000 743	KNOB, HARD W/SET SCREW
7	1	02 000 055	GROMMET, 3/8" ID 1/2" OD
8	1	02 000 100	LINESTAKE, 1/4" I.D. NYLON
9	1	02 000 102	CABLE, CONTROLLER
10	8	02 000 106	SPEED CLIP, #10
11	1	02 000 109	GROMMET, 1/4" ID 3/8" OD
12	4	02 000 115	NUT, 10-24 HEX ZINC
13	2	02 000 118	NUT, 7/16-28 PN'L ZINC
14	2	02 000 240	BOLT, 1/4-20 x 1 1/4 SS
15	1	02 000 241	GROMMET, RUBBER ISOLATION
16	2	02 000 283	NUT, 1/4-20 NYLON LOCK
17	53	02 000 454	SCREW, #10 x 3/8 TORX PAN BLK
18	1	03 000 166	COIL, COOL ONLY
19	1	03 000 168	COIL, HEAT 340
20	1	05 000 022	VALVE, EXP BLOCK 134a 2T
21	1	06 000 371	BRACKET, BLOCK VALVE MOUNTING
22	1	06 000 455	BRKT, 946 MOTOR SUPPORT
23	1	06 000 800	HOUSING, RIGHT SIDE
24	1	06 000 801	HOUSING, LEFT SIDE
25	1	06 000 802	BRACKET, RIGHT HEATER COIL MOUNT
26	1	06 000 803	BRACKET, LEFT HEATER COIL MOUNT
27	1	06 000 804	PLATE, 340 HTR TUBE COVER
28	1	06 000 805	HOUSING, BACK
29	1	06 000 806	DRAIN, PAN 340
30	1	06 000 807	BRACKET, BLOCK VALVE MONTING
31	1	06 000 808	PLENUM, 340 TOP
32	1	06 000 809	HOUSING, DIVIDER/BLOWER MOUNT
33	1	06 000 810	GRILL, INTAKE
34	1	06 001 192	BRACKET, BLOWER SUPPORT SHORT
35	2	08 000 008	O-RING, #8 13/32
36	1	08 000 141	FILTER, 12 x 12 x 1/2
37	1	09 000 262	FACEPLATE, 340 SWITCH
38	2	11 000 128	LOUVER, RECTANGULAR / ROUND COR
39	2	11 000 172	LOUVER, BOX BEZEL
40	1	11 000 214	BLOWER ASSY, W/RESIS, 12v UNIM



PROPRIETARY & CONFIDENTIAL. UNPUBLISHED WORK COPYRIGHT PRO AIR LLC. PRO AIR, LLC CLAIMS PROPRIETARY RIGHTS IN THE MATERIAL DISCLOSED HEREON. NEITHER THIS DRAWING NOR ANY REPRODUCTION OR PORTION THEREOF MAY BE DISTRIBUTED OR USED TO MANUFACTURE ANYTHING SHOWN HEREON WITHOUT PERMISSION IN WRITING FROM PROAIR, LLC.

REV. A

A 18-232		RELEASED TO PRODUCTION		CEB	11/15/18		TITLE: FRIGIKING, 340 HEAT COOL		PART NO. 66 000 476	
LET.	NO.	REVISION		BY	DATE		APPROVED	USAGE: ALL	SCALE: .2 : 1	SIZE A
						2900 COUNTY RD 6 W ELKHART, IN 46514		SHEET 1 OF 2		



PROPRIETARY & CONFIDENTIAL. UNPUBLISHED WORK COPYRIGHT PRO AIR LLC. PRO AIR, LLC CLAIMS PROPRIETARY RIGHTS IN THE MATERIAL DISCLOSED HEREON. NEITHER THIS DRAWING NOR ANY REPRODUCTION OR PORTION THEREOF MAY BE DISTRIBUTED OR USED TO MANUFACTURE ANYTHING SHOWN HEREON WITHOUT PERMISSION IN WRITING FROM PROAIR, LLC.

REV. A

		SIGNATURES		DATE		TITLE:		PART NO. 66 000 476	
		DRAWN CEB		11/15/18		FRIGIKING, 340 HEAT COOL		SCALE: .2 : 1 SIZE A	
		CHECKED RAI		11/15/18				SHEET 2 OF 2	
A	18-232	RELEASED TO PRODUCTION		CEB	11/15/18	USAGE: ALL			
LET.	NO.	REVISION		BY	DATE				

